

Real-time Linux-based broadcast automation

OVERVIEW

Upload, schedule and play all of your programs on QuickCast with zero transcoding required. QuickCast is operated over a web browser interface, which means you can access your content from anywhere on any device. QuickCast gives you the ability to air one live input while recording it to disk, overlay up to four regions on top of scheduled playout, store 4TB of programming and more - all in a single sleek 2RU chassis. QuickCast is a great low cost, feature rich solution for only \$9,995.

FEATURES

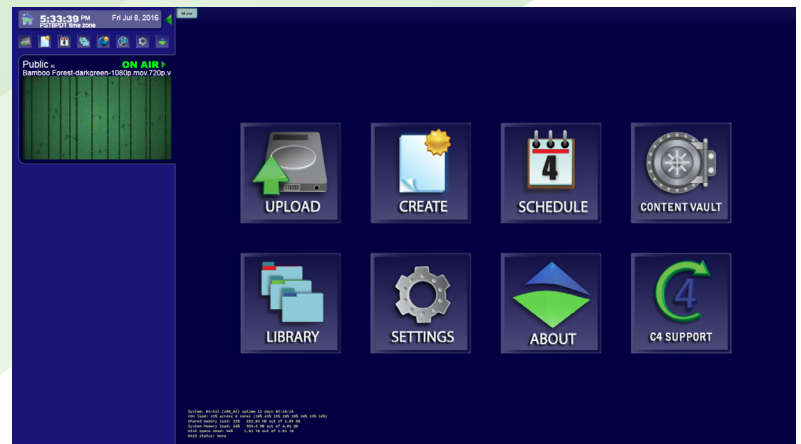
- Zero transcoding - HD/SD compatible out of the box
- Upload & schedule a program in seconds
- Edit videos on a non-linear timeline in our web UI
- Add graphic overlays on your channel in seconds
- Automatically normalize audio volume on channel
- Record a single incoming video input in HD or SD
- Monitor your channel from the web UI
- Create a text crawl in seconds, with support for RSS
- Play background music during slides automatically
- Automatically fill gaps in schedules
- Reliable and attentive support with C4

ADDITIONAL OPTIONS

- Additional recordable/live input
- Additional storage - 6TB or 8TB upgrade
- Additional RAID-1 option



Internal dynamic messaging capability with support for text, graphics and video along with automated coming up next functionality.



Web browser based user interface.



Upload



Schedule



Play



CASTUS Corporation
 165 NE Juniper Street Suite 101
 Issaquah WA, 98027
www.CASTUS.tv

OUTPUTS	
Video & Audio Output	HD-SDI HD or SD uncompressed video with embedded audio
IP Output	MPEG2 Transport Stream with MPEG2 or H.264 video and AAC, AC3 or MPEG audio
Preview Output	HDMI Output for internal preview channel

INPUTS	
Physical Inputs	(1) HD-SDI or IP over ethernet with a 3.5mm line-in audio input
Supported Formats	MPEG2, MPEG4, vob, m2ts, mov, avi, wav, mp4, m4a, mp3, AAC & AC3

STORAGE	
Hard Drive	4TB, 6TB or 8TB - optional RAID
Operating System	120GB internal SSD for CASTUS & Linux Operating System
Integrates with	QuickStream VOD, Facillis

SPECIFICATIONS	
Operating System	Linux CASTUS OS
Control Interface	Web Interface (Firefox or Chrome)
Network Connection	(2) 1 gigabit connections, optional 10 GbE card
Data Center Integration	NTP
Controls	BlackMagic IP/SDI & Knox RS232 routing switchers
Content Introduction	HTTP Web interface & FTP
Closed Captioning	EIA-608 (Analog Line 21) and CEA-708 (Digital TV)
HD/SD Inputs	1 or 2 (available upgrade option)
HD/SD outputs	1
Total channel overlay regions	4

PHYSICAL	
Power	Single 500 Watt power supply
Power Consumption	120 Watts
Dimensions	19"d X 17"w X 3.25"h
Weight	35 lbs

QuickCast is a powerful and efficient video playout server in a sleek 2RU server chassis. With QuickCast, you can air one live input while recording it to disc, overlay up to four graphics or crawls on top of scheduled playout and store up to 4TB of programming. With zero transcoding it's as easy as upload, schedule, play.

